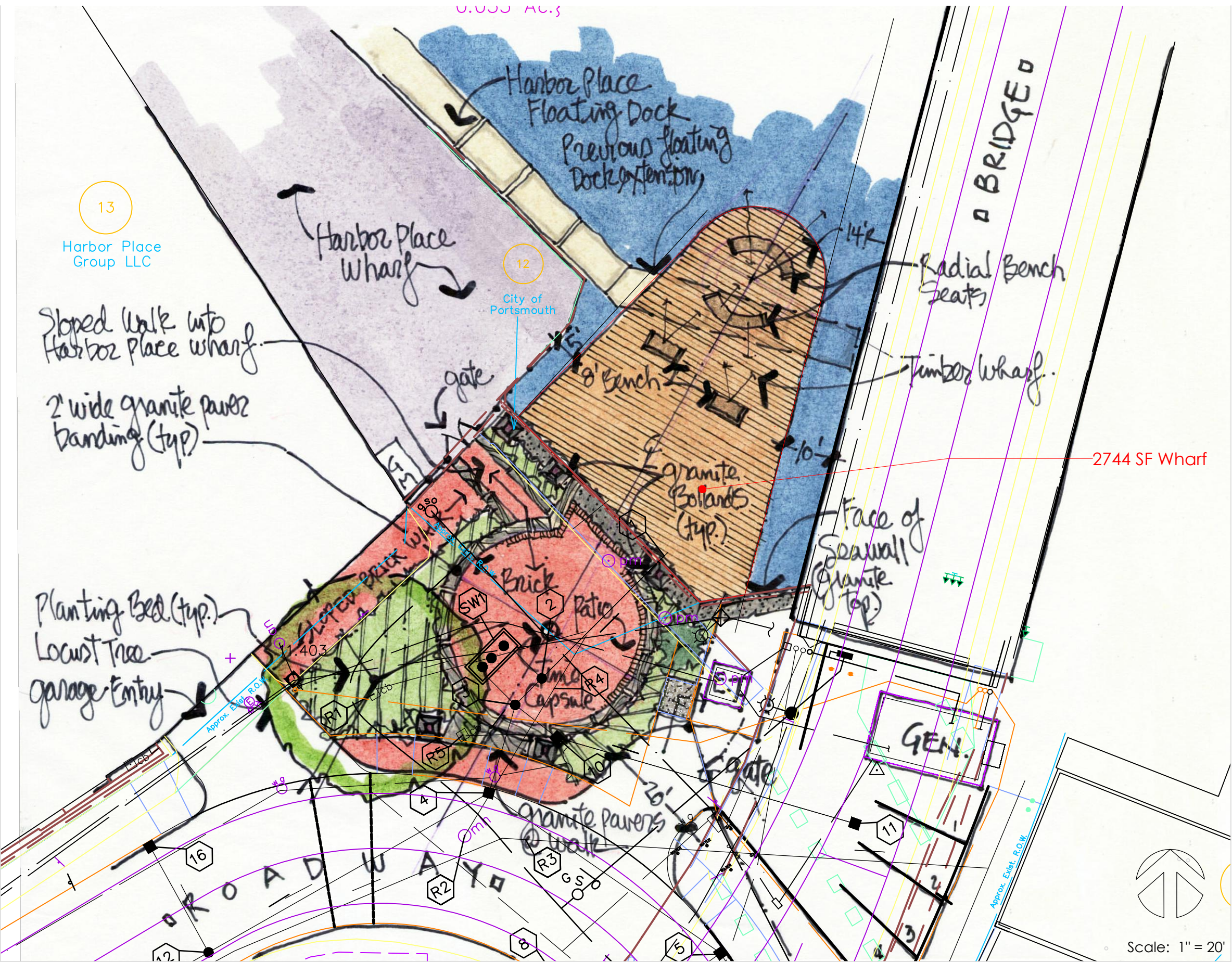


Concept Plan B

Harborwalk Park
Portsmouth, New Hampshire

March 30, 2013



Prepared by:
g2+1 LLC
Landscape Architecture Site Planning Graphics
70 New Road Salisbury New Hampshire 03268
p/f 603 648 6434 www.g2plus1.com

WATERFRONT ENGINEERS LLC
3 Linda Lane, Stratham, NH, 03885
603 772-3706
www.waterfrontengineers.com

HAIGHT ENGINEERING, PLLC
CIVIL ENGINEERS
P.O. BOX 1166, 181 WATSON ROAD
DOVER, NEW HAMPSHIRE
603.750.4266 FAX 603.749.7348